



SOCIAL SECURITY ADMINISTRATION (SSA) Building Enclosure Commissioning

The new enclosure consists of unitized curtainwall panels assembled over the original nine-story structural concrete frame.

WDP's BECx services for the design phase included the review of the building envelope systems documentation and developing the owner's project requirements (OPR) and subsequent basis of design information (BOD), performing design reviews of the project documents, attending design assistance meetings, and ultimately developing an envelope commissioning plan for the construction phase and post-occupancy phases of the project. WDP also provided technical advice to the design team on methods to improve and verify the enclosure's performance as this project was commissioned under ASTM E2813 "Standard Practice for Building Enclosure Commissioning," Enhanced Commissioning.

BECx services during the construction phase included a review of enclosure-related submittals, shop drawings, and RFIs to assist the design team in identifying and preventing problems; attending pre-construction conferences to help orient the project team on the specific challenges in constructing a panelized curtainwall façade; attending the performance mock-up testing and assisting the Owner in interpreting the results; coordinating and witnessing the field performance verification testing for air and water infiltration, and periodically visiting the project site to observe the building envelope construction. During the fabrication of the panelized curtainwall units, WDP visited the fabrication shop to review the quality control procedures.

WDP's BECx activities for the closeout phase included the development of a final commissioning report, collecting warranties and manufacturer data sheets into an enclosure maintenance manual, and developing training materials for the building staff on enclosure operation and maintenance.



LOCATION
Woodlawn, MD

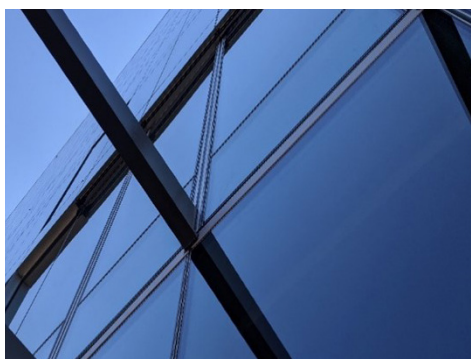
SIZE
170,000 SF

CONSTRUCTION COST
\$120M

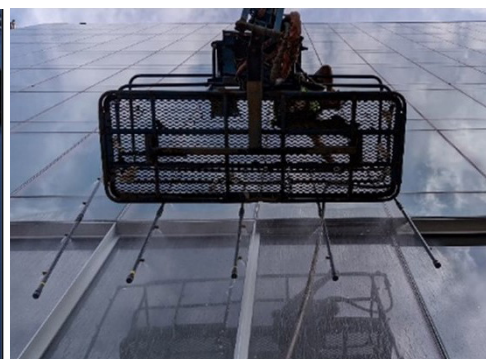
YEAR COMPLETED
2021



Chamber smoke tracer testing to detect potential air gaps between panels



Canopy beams protruding through unitized panels of curtain walls



Water applied to exterior by spray rack E1105 testing.